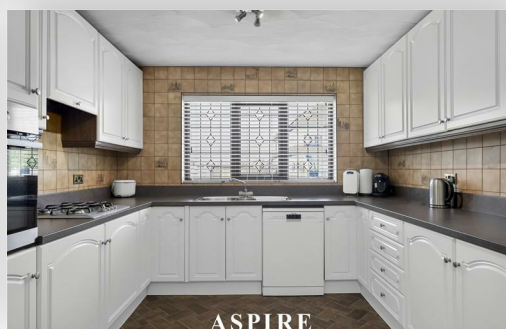


**To arrange a viewing contact us
today on 01268 777400**



St. Clements Road, Benfleet Asking price £575,000

This impressive four double bedroom detached family home, situated in a sought after Benfleet location and offering spacious accommodation throughout.

Perfectly suited to a growing family, the property boasts a generous layout with well proportioned rooms, a welcoming living space, a fitted kitchen, four genuine double bedrooms and the added benefit of an en-suite to the main bedroom.

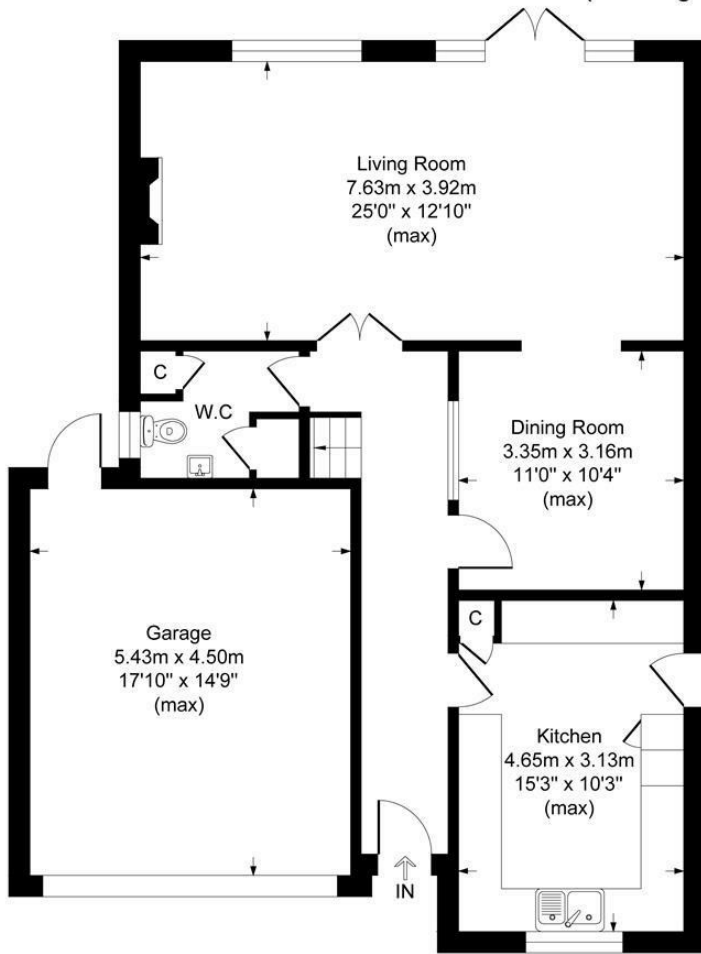
Externally, the home continues to impress with a private rear garden, off street parking and a garage, providing excellent practicality for family living.

Located within easy reach of local schools, shops, transport links and Benfleet's popular amenities, this fantastic home offers the perfect balance of space, comfort and convenience.

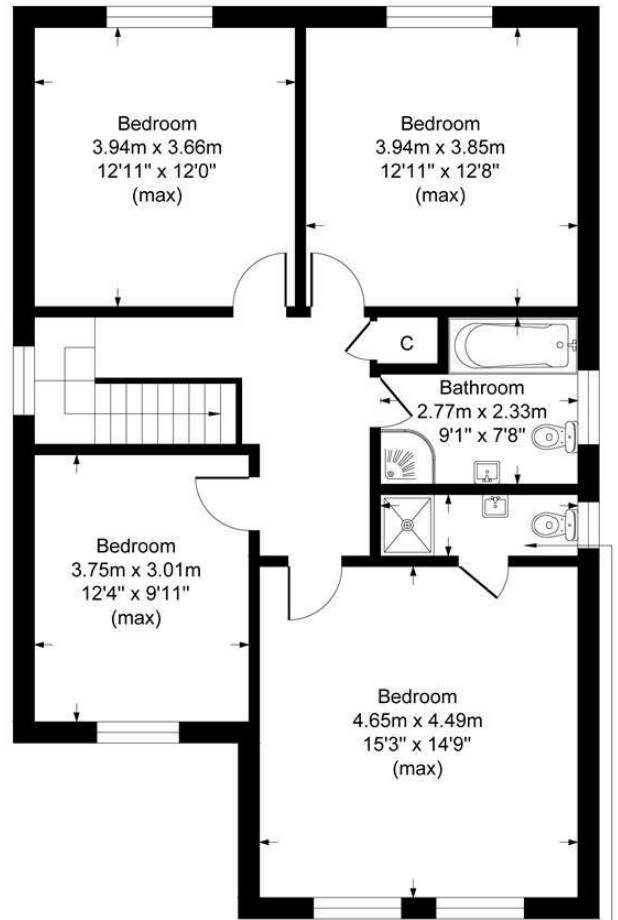
www.aspireestateagents.co.uk

St Clements

Approximate Gross Internal Floor Area = 183.1 sq m / 1971 sq ft
(Including Garage)

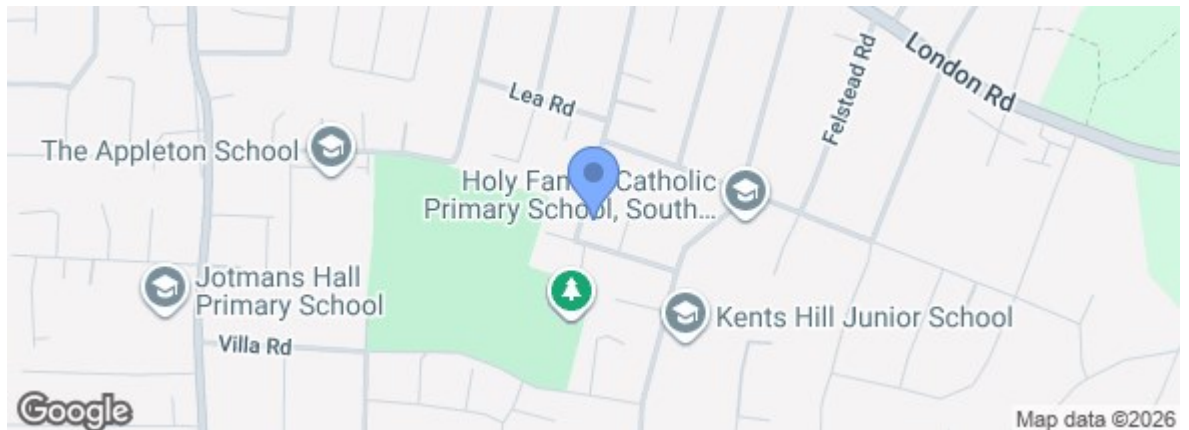


Ground Floor



First Floor

| Energy Efficiency Rating | |
|---|-------------------------|
| Rating | Current / Potential |
| Very energy efficient - lower running costs | |
| (92 plus) A | |
| (81-91) B | |
| (69-80) C | |
| (55-68) D | |
| (39-54) E | |
| (21-38) F | |
| (1-20) G | |
| Not energy efficient - higher running costs | |
| England & Wales | EU Directive 2002/91/EC |
| Environmental Impact (CO ₂) Rating | |
| Rating | Current / Potential |
| Very environmentally friendly - lower CO ₂ emissions | |
| (92 plus) A | |
| (81-91) B | |
| (69-80) C | |
| (55-68) D | |
| (39-54) E | |
| (21-38) F | |
| (1-20) G | |
| Not environmentally friendly - higher CO ₂ emissions | |
| England & Wales | EU Directive 2002/91/EC |



Under the Property Misdescriptions Act 1991 we make every effort to ensure our sales details are accurate but they are a general outline and do not constitute any part of an offer or contract. Any services, equipment and fittings have not been tested and no warranty can be given as to their condition. We strongly recommend that all the information provided be verified by your advisors and in particular, measurements required for a specific purpose such as fitted furniture or carpets. Please tell us if you have any problems and members of our branches will help either over the phone or in person. A copy of our complaints procedure is available on request. The details are issued on the strict understanding that any negotiations in respect of the property named herein are conducted through Aspire Estate Agents.